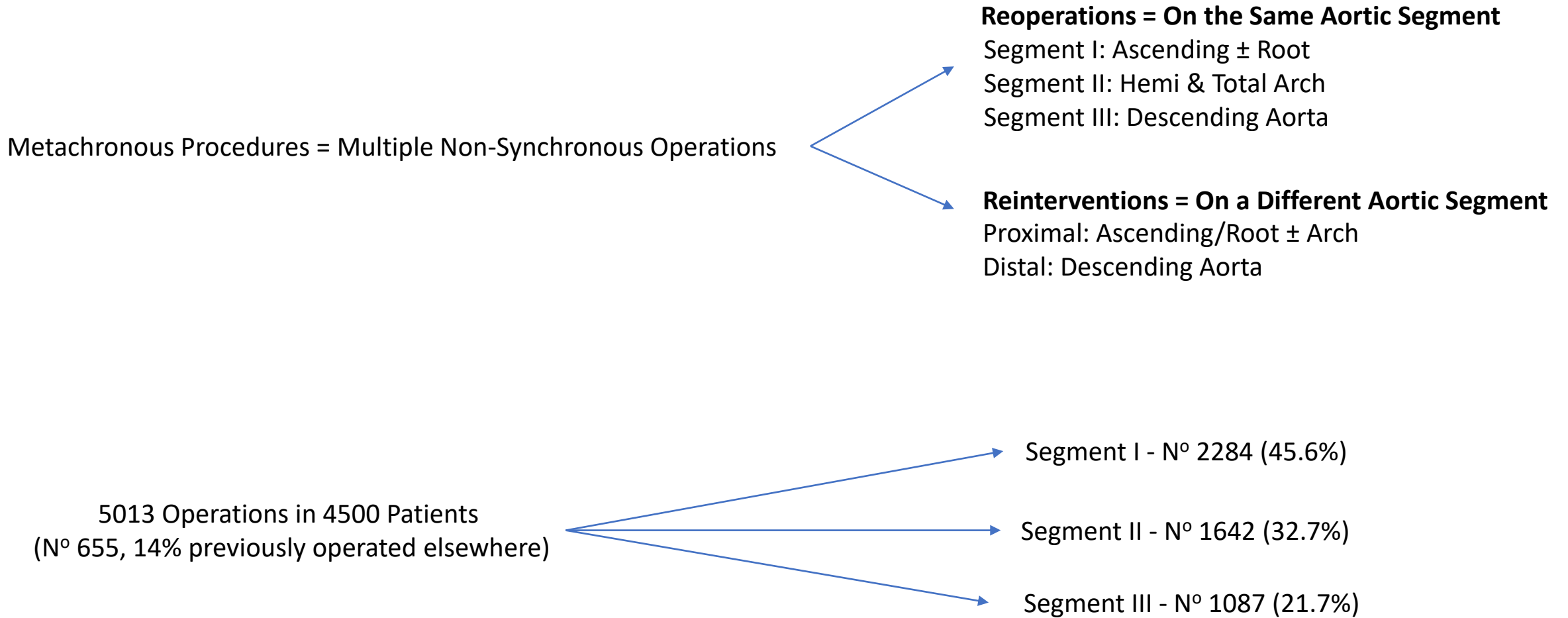


Association of Metachronous Aortic Procedures to Operative Mortality and Survival in a Quaternary Referral Center: 5013 operations in 4500 patients

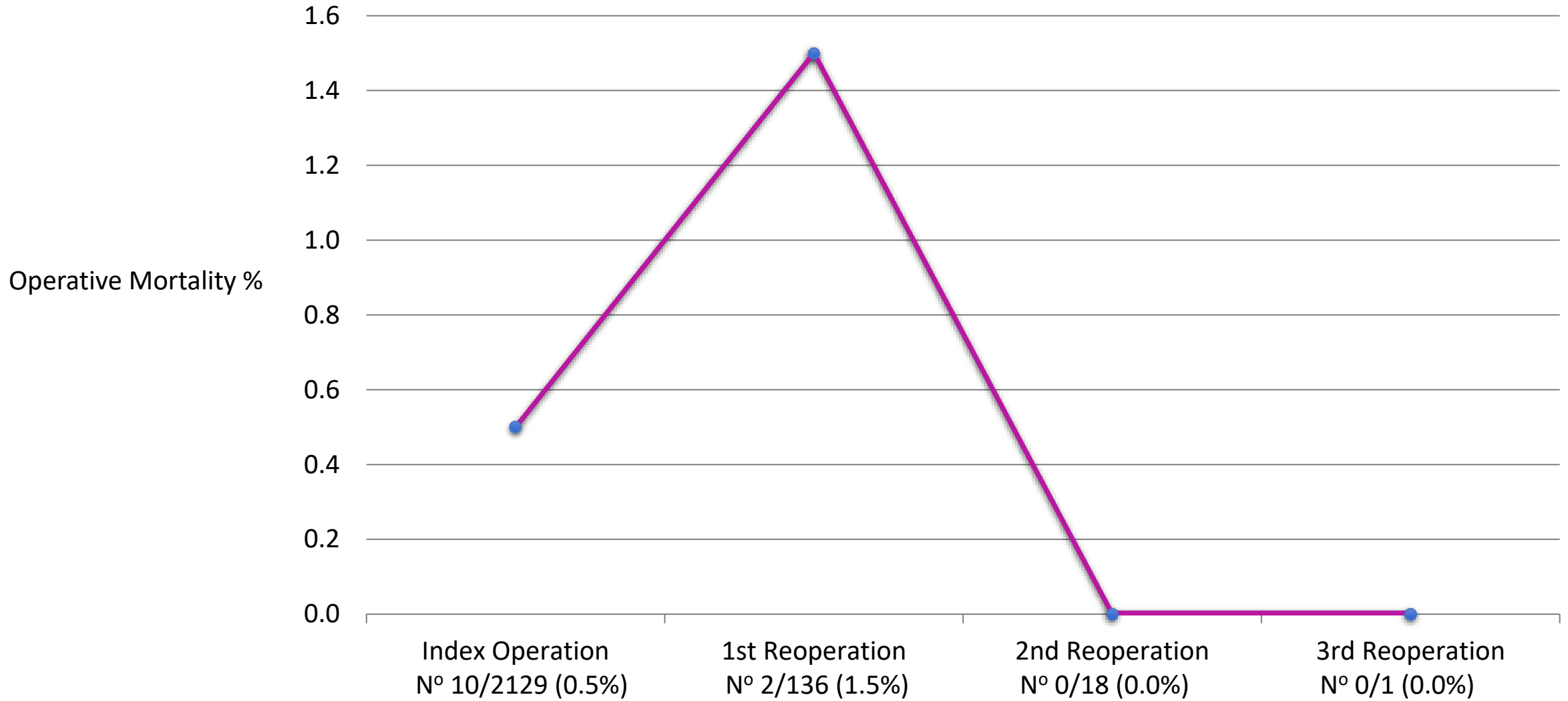
Ivancarmine Gambardella ¹, berhane worku ², Christopher Lau ³, Robert Tranbaugh ⁴, Sandhya Balaram ⁵, Leonard Girardi ⁴ ¹ Weill Cornell Medical Center, New York, NY, ² Weil Cornell Medical College, Brooklyn, NY, ³ New York Presbyterian-Weill Cornell, New York, NY, ⁴ Weill Cornell Medicine, New York, NY, ⁵ Mount Sinai, New York, United States

¹ Weill Cornell Medical Center, New York, NY, ² Weil Cornell Medical College, Brooklyn, NY, ³ New York Presbyterian-Weill Cornell, New York, NY, ⁴ Weill Cornell Medicine, New York, NY, ⁵ Mount Sinai, New York, United States

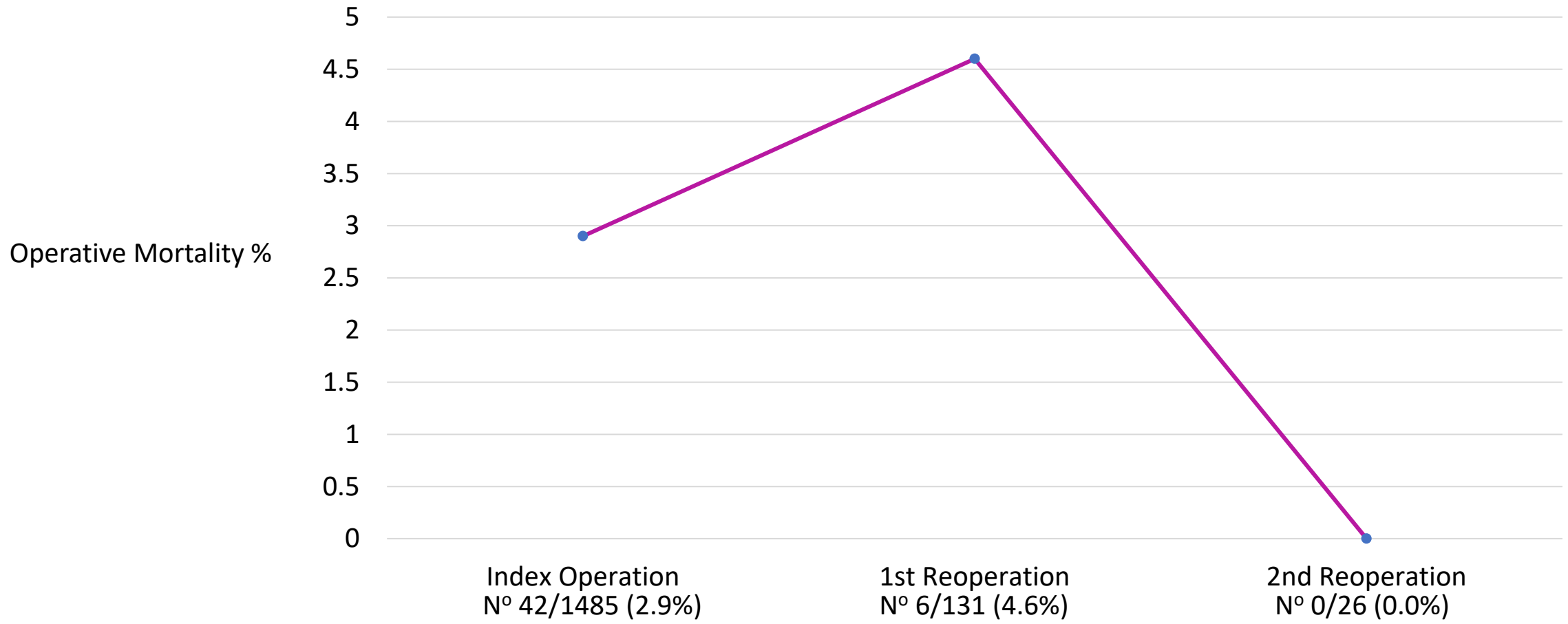
Association of Metachronous Aortic Procedures to Operative Mortality and Survival in a Quaternary Referral Center: 5013 operations in 4500 patients



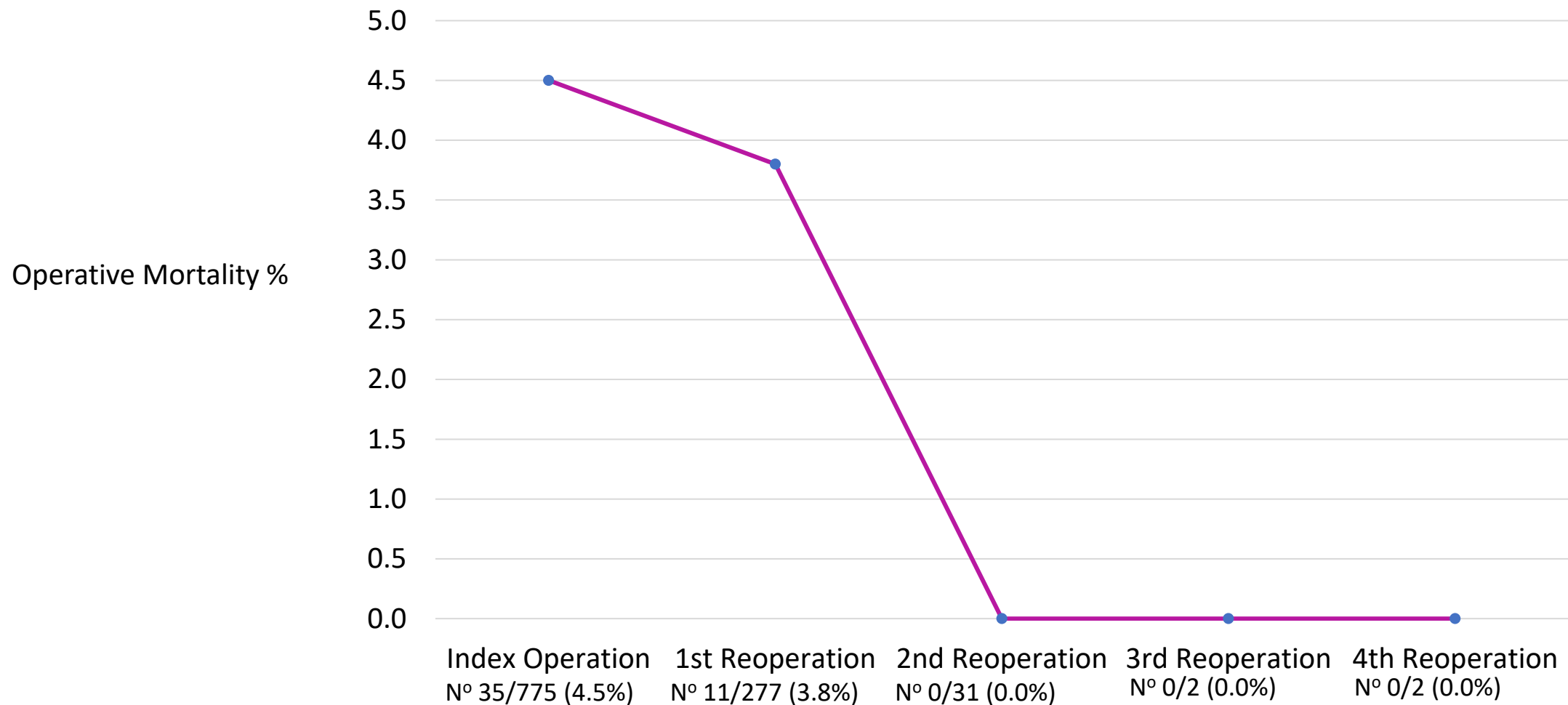
Operative Mortality for Sequential Reoperations on Segment I



Operative Mortality for Sequential Reoperations on Segment II

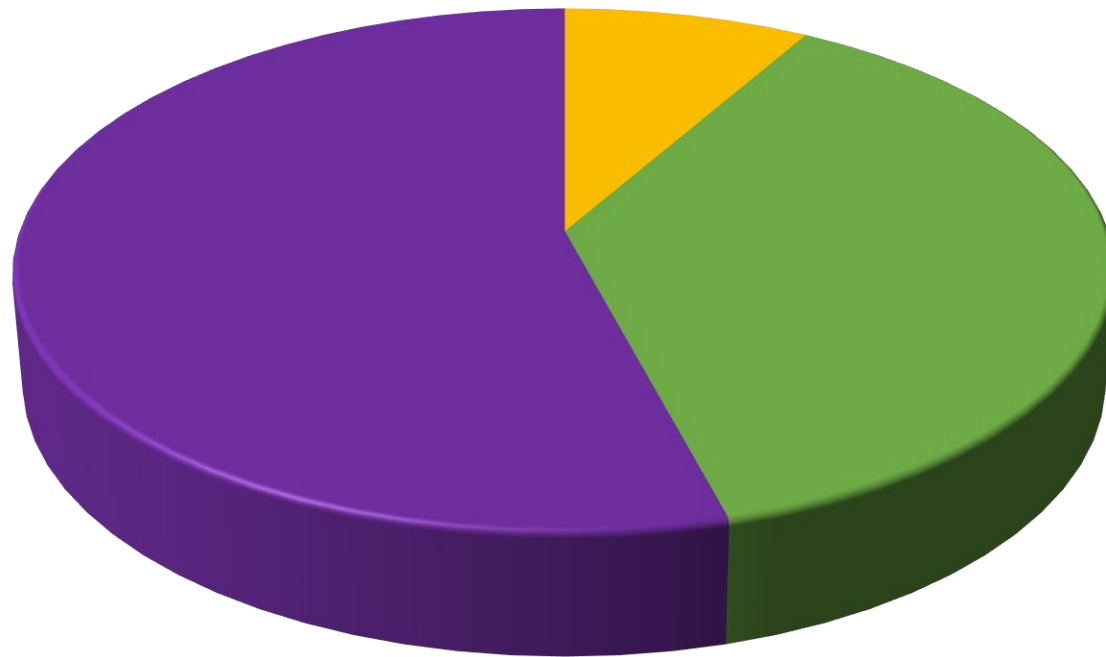


Operative Mortality for Sequential Reoperations on Segment III



Aortic Reinterventions after Initial Segment I Procedures

Initial Segment I Procedures
N° 2473



Subsequent Reinterventions

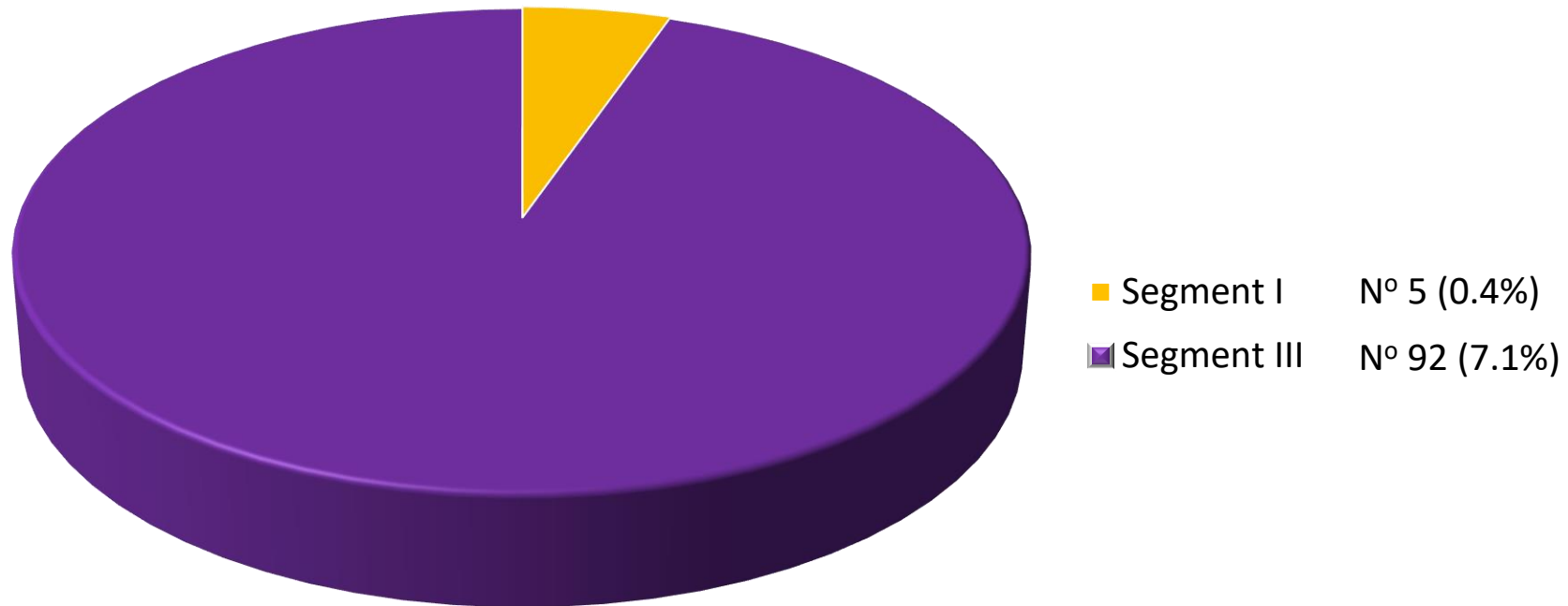
■ Segment II N° 4 (0.2%)

■ Segment III N° 23 (0.9%)

■ Segment II + III N° 32 (1.3%)

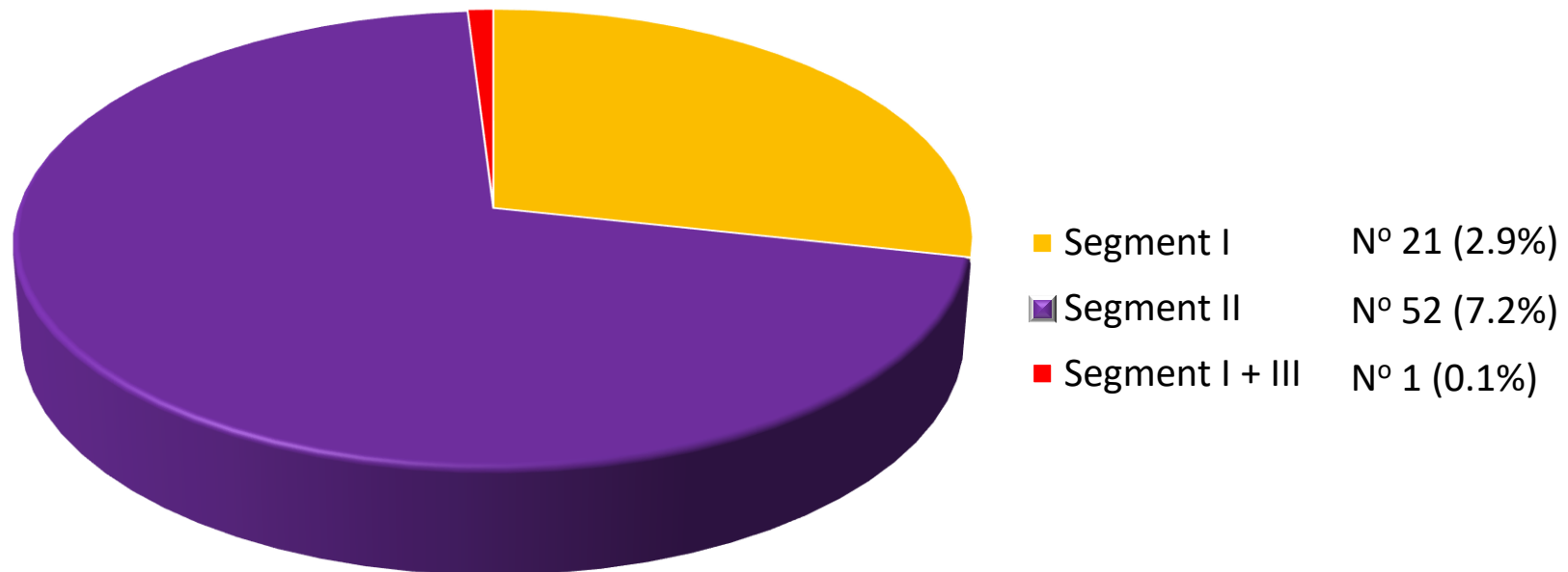
Aortic Reinterventions after Initial Segment II Procedures

Initial Segment II Procedures
N° 1301

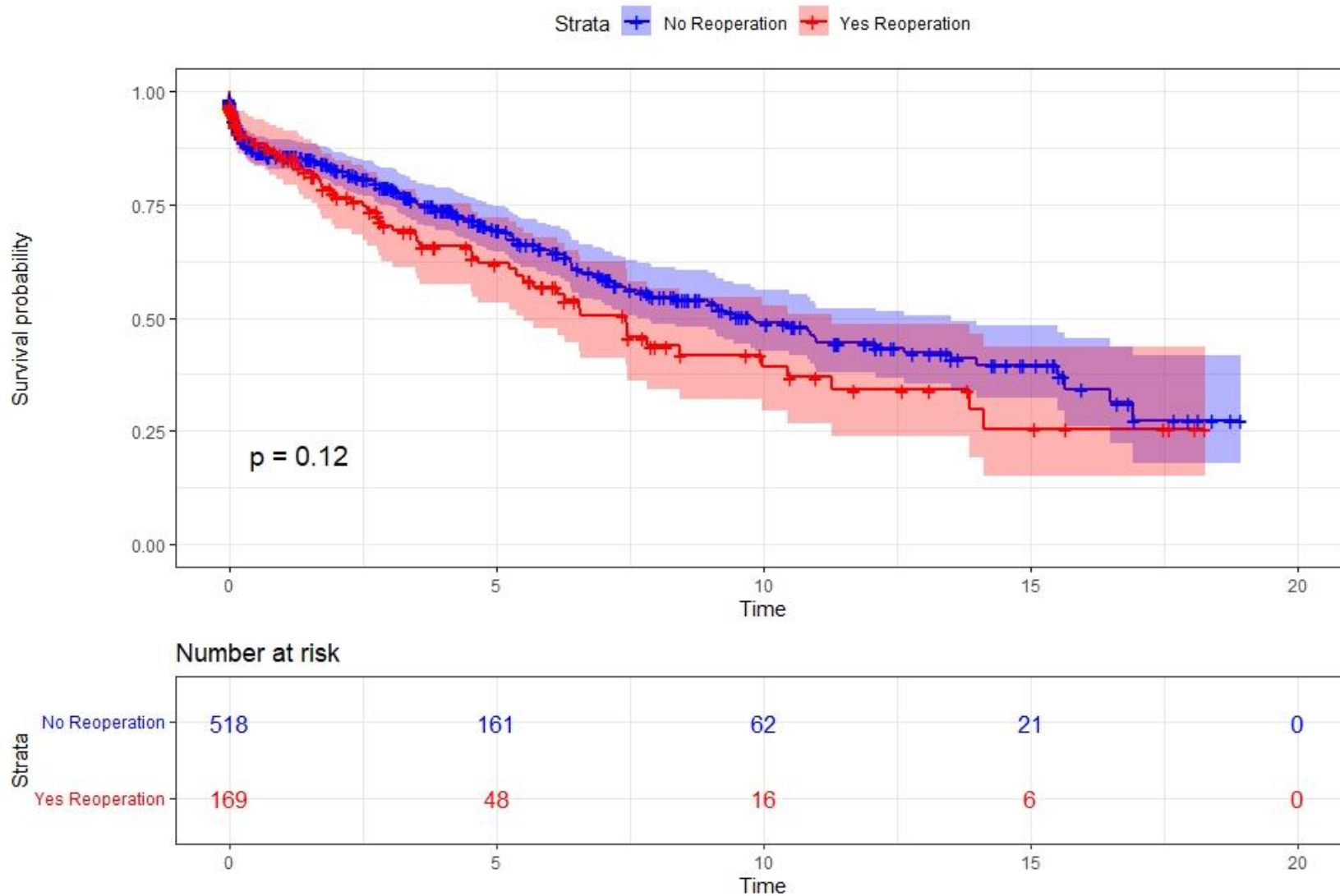


Aortic Reinterventions after Initial Segment III Procedures

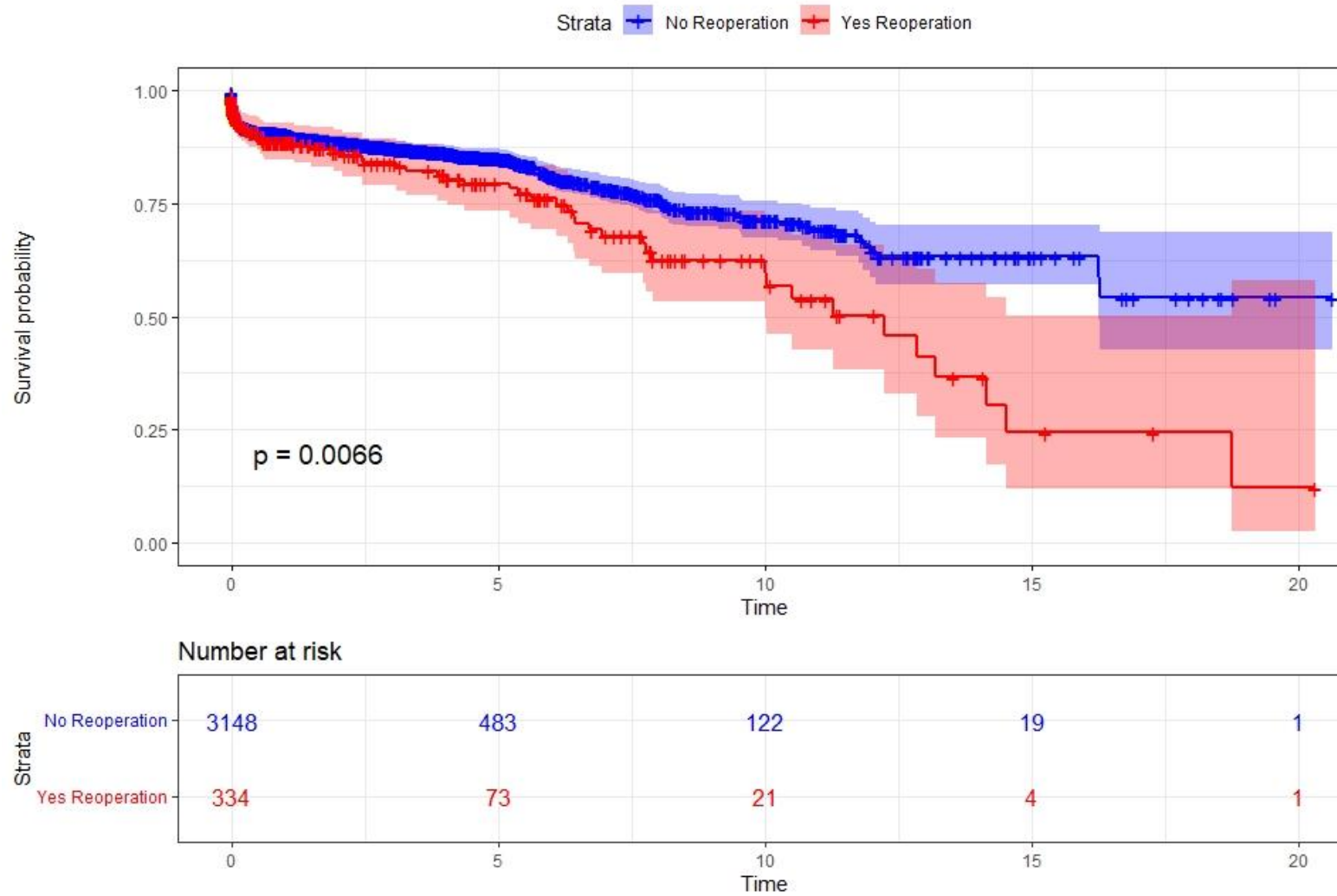
Initial Segment III Procedures
N° 766



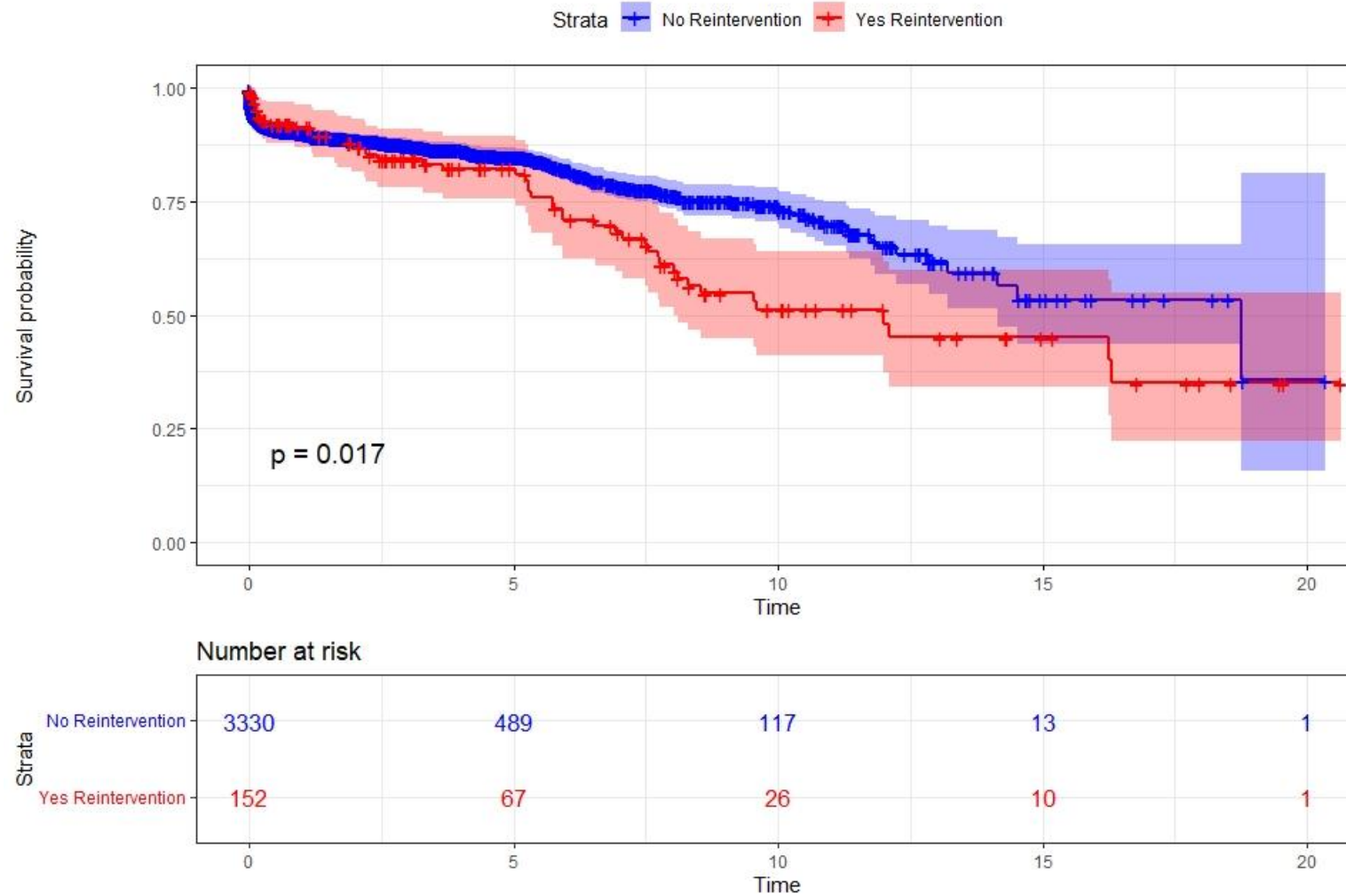
Association of Survival to Reoperations on the Proximal Aorta



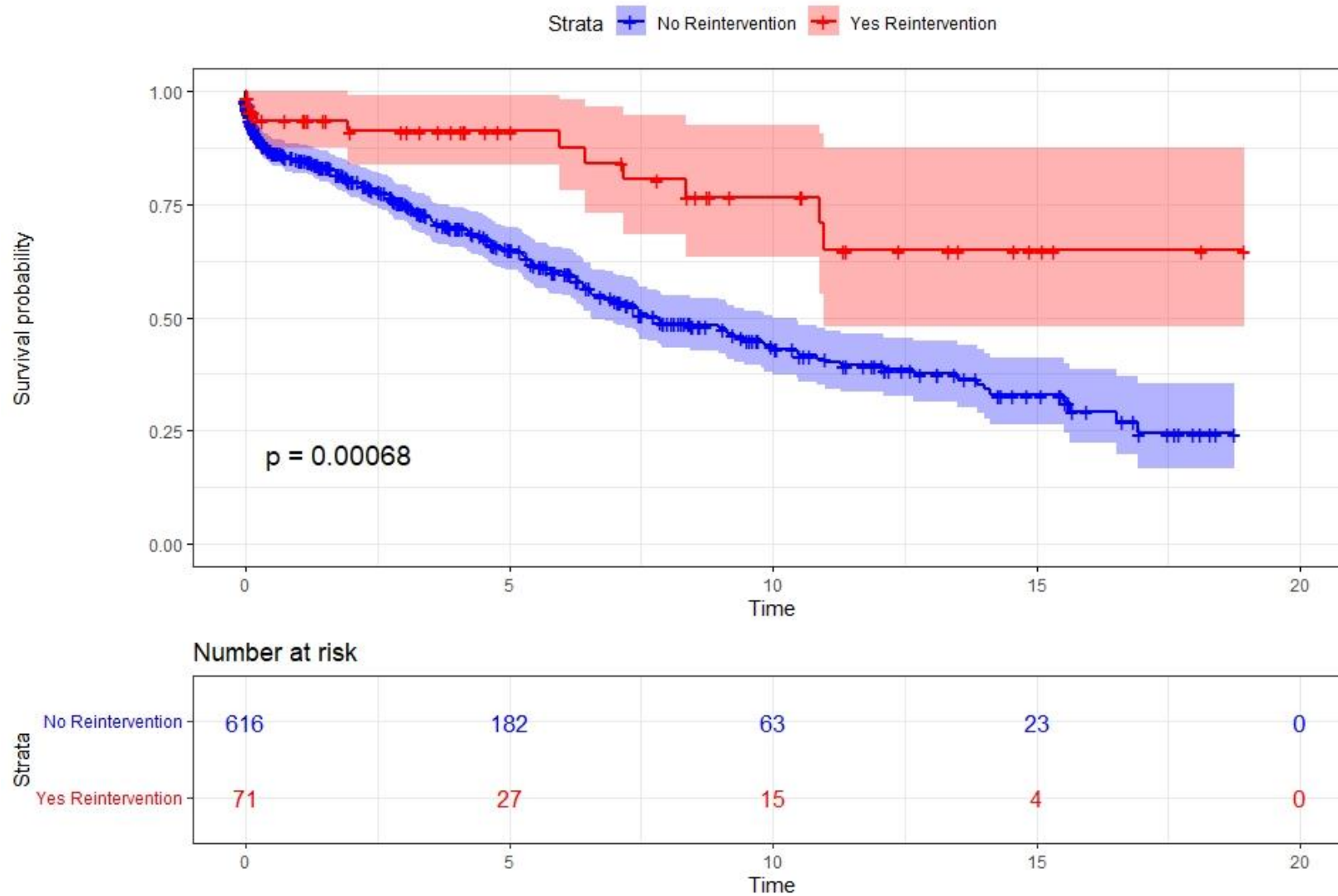
Association of Survival to Reoperations on the Distal Aorta



Association of Survival to Distal Reinterventions after Proximal Aortic Operations



Association of Survival to Proximal Reinterventions after Distal Aortic Operations



Conclusions

- ❖ Metachronous aortic procedures can be performed with low operative mortality in a quaternary center.
- ❖ Of all metachronous procedures, only reinterventions on the proximal aorta after distal index operation are associated to a survival benefit