

Outcomes of Staged Completion Extent II Thoracoabdominal Aortic Aneurysm Repair

Yuki Ikeno, Lucas Ribe, Alexander Mills,
Harleen Sandhu, Rana Afifi, Charles C. Miller,
Hazim J Safi, Anthony L. Estrera, Akiko Tanaka

Department of Cardiothoracic and Vascular Surgery
McGovern Medical School at Houston
Memorial Hermann Heart & Vascular Institute

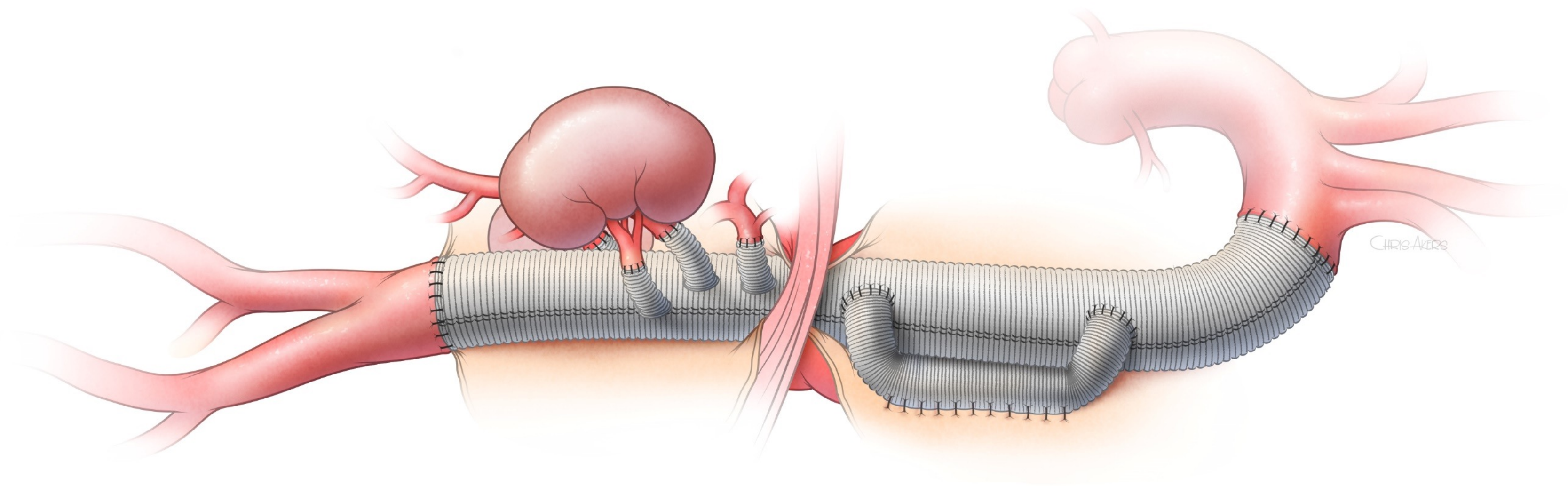
Department of
**Cardiothoracic &
Vascular Surgery**



Introduction

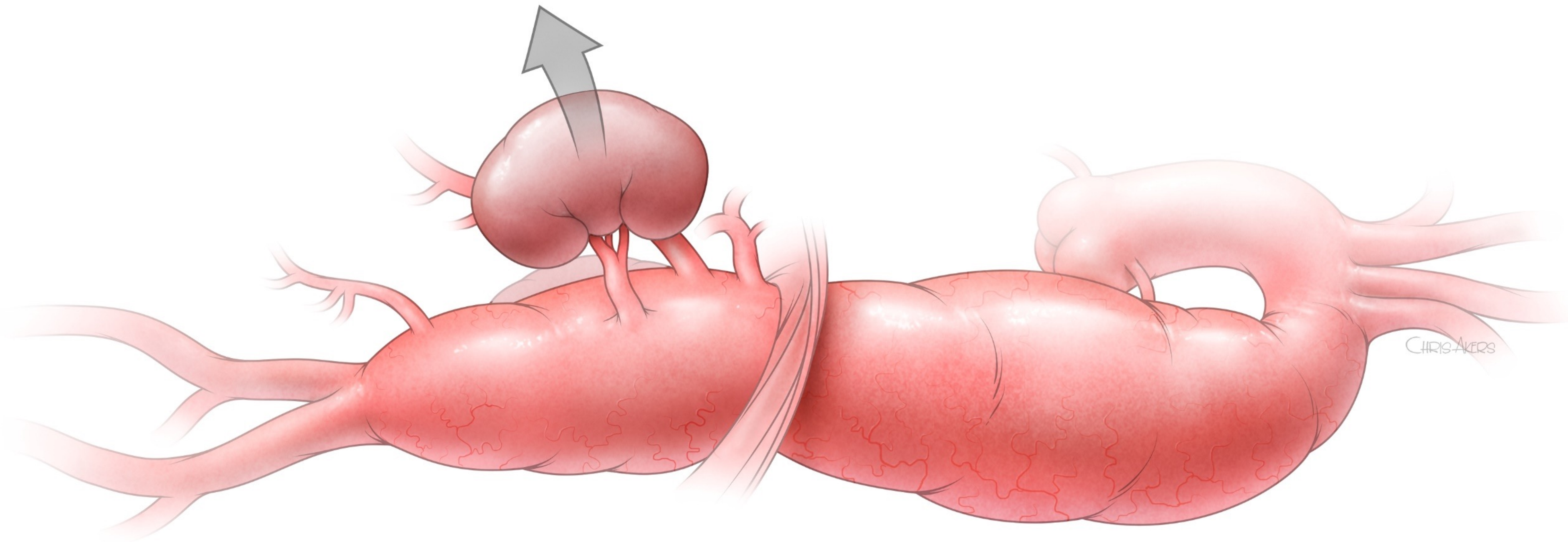
TAAAs with mildly enlarged aortic segments

Single-stage Extent II vs. **Staged Extent II**



Methods

Primary and Redo-completion extent II TAAA
between 1999 - 2019



Definition

Primary repair :

Single-stage extent II TAAA repair
at initial encounter

Completion repair :

Staged-aortic repair with a prior distal aortic
to replace the entire extent II TAAA in continuity

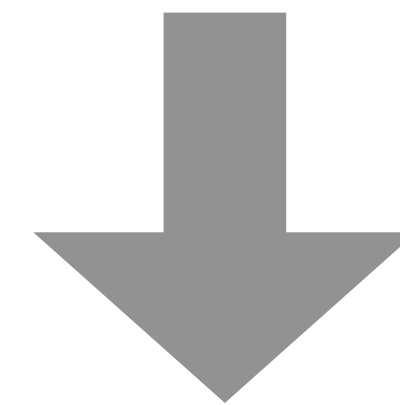
Results

Primary

141 patients

Completion

105 patients



Extent of Repair

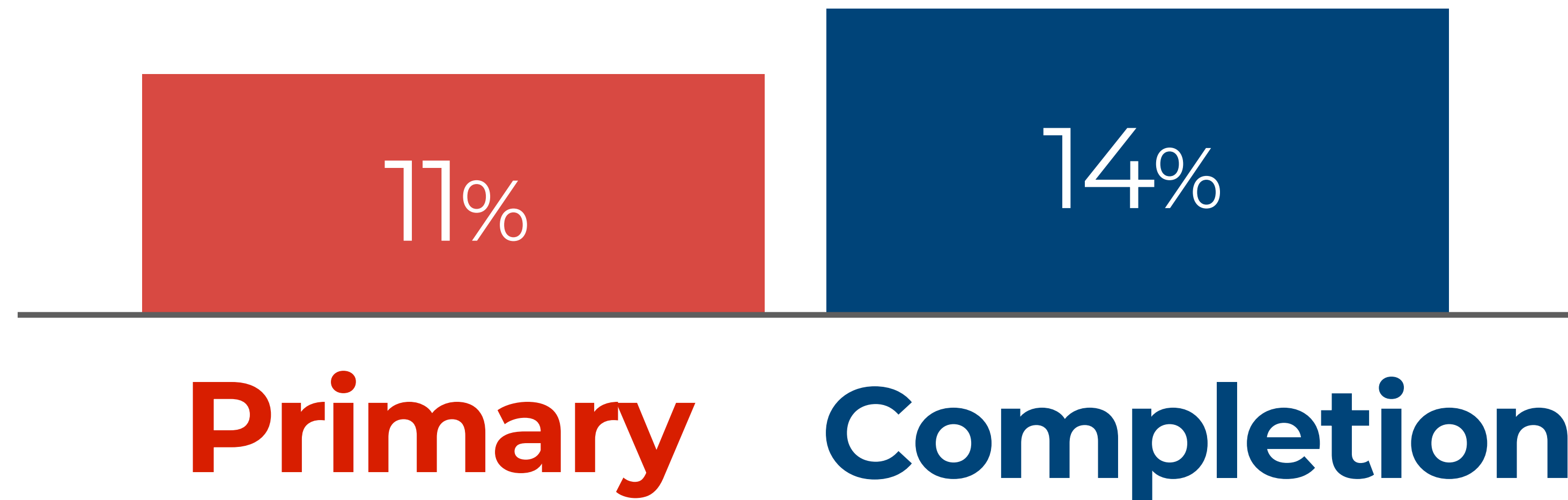


Patient Characteristics

	Primary (n=141)	Completion (n=105)	p value
Age (years)	56 \pm 17	56 \pm 17	0.88
Female	51 (36)	31 (30)	0.27
Hypertension	113 (80)	96 (91)	0.01
CKD	24 (17)	25 (24)	0.19
COPD	46 (33)	44 (42)	0.14
Dissection	85 (60)	63 (60)	0.96
Marfan	39 (28)	28 (27)	0.85
Pump time (min)	81 \pm 34	101 \pm 31	<0.01

30-day mortality did not differ

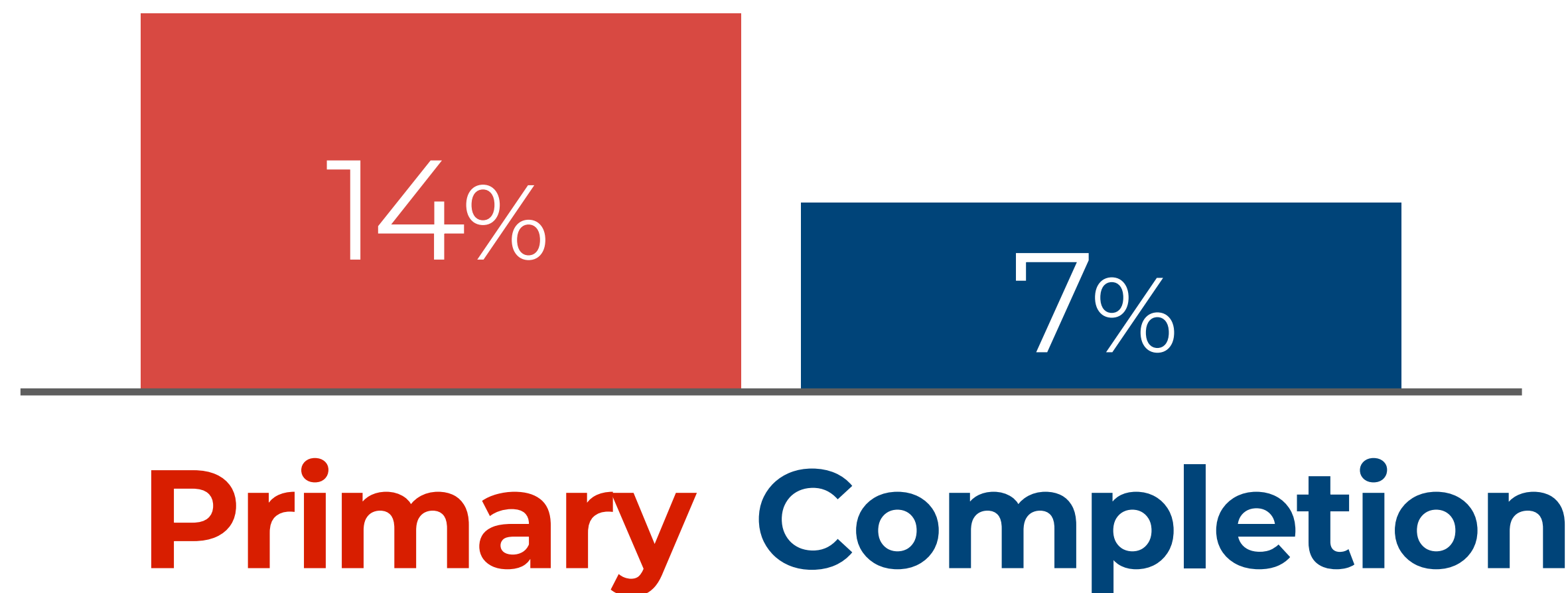
P = 0.543



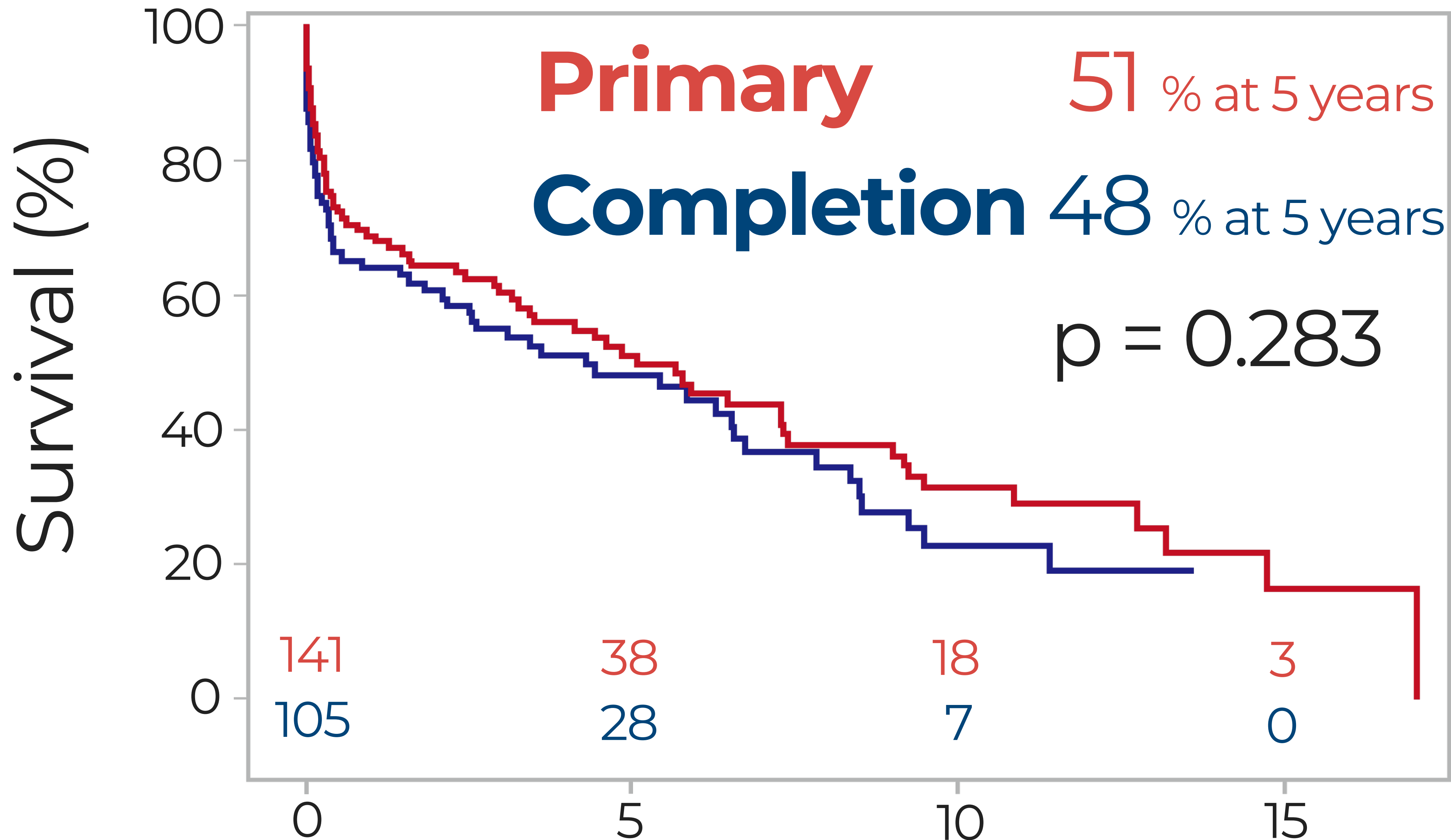
Higher **paraplegia** rate in primary repair

Any
 $p = 0.067$

Permanent
 $p = 0.469$



Overall survival was similar



Conclusions

Outcomes after staged-completion extent II TAAA repairs were comparable to that of primary extent II repairs.

Staging the repair may reduce the risk of paraplegia after extent II repairs.

Without significant enlargement, a limited initial repair with expectant completion extent II repair is a reasonable approach.