

Surgical outcomes of mixed aortic valve disease : Severe aortic stenosis with regurgitation exceeding a moderate degree

Soo Jin Park¹, Kitae Kim², Hong Rae Kim², Ho Jin Kim², Jae Suk Yoo², Sung-Ho Jung², Cheol Hyun Chung² and Joon Bum Kim²

Department of Thoracic and Cardiovascular Surgery, Ajou University Medical Center, Ajou University School of Medicine, Suwon, South Korea

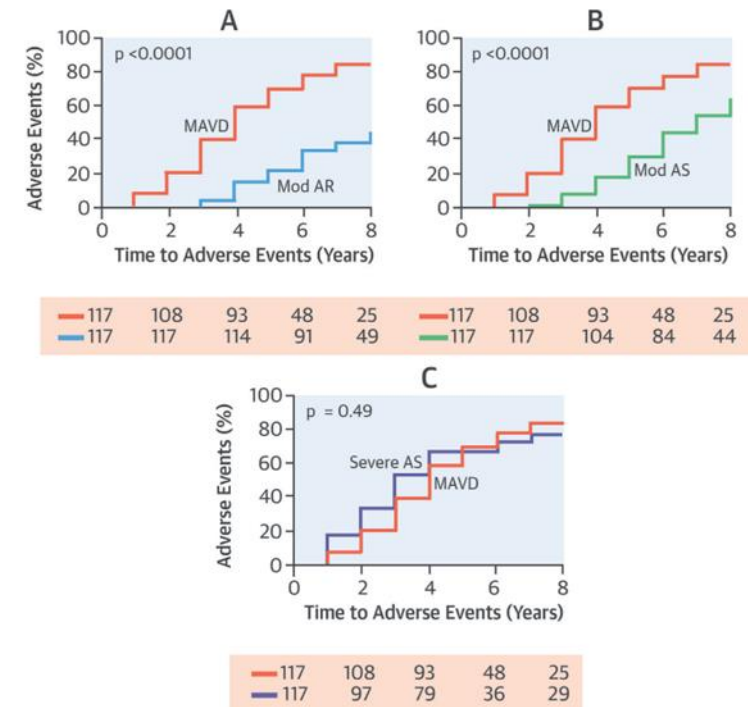
Department of Thoracic and Cardiovascular Surgery, Asan Medical Center, University of Ulsan College of Medicine, Seoul, South Korea

Introduction

▪ Mixed Aortic Stenosis (AS) with Aortic Regurgitation (AR)

	Population		AS	AR
Total cases	10 164 211		36 319	13 853
	AS		AR	
	N	%	N	%
AS	36 319	100	2482	17.9
AR	2482	6.8	13 853	100.0
MS	543	1.5	117	0.8
MR	1849	5.1	1488	10.7
PS	54	0.1	75	0.5
PR	13	0.0	33	0.2
TS	37	0.1	11	0.1
TR	206	0.6	156	1.1

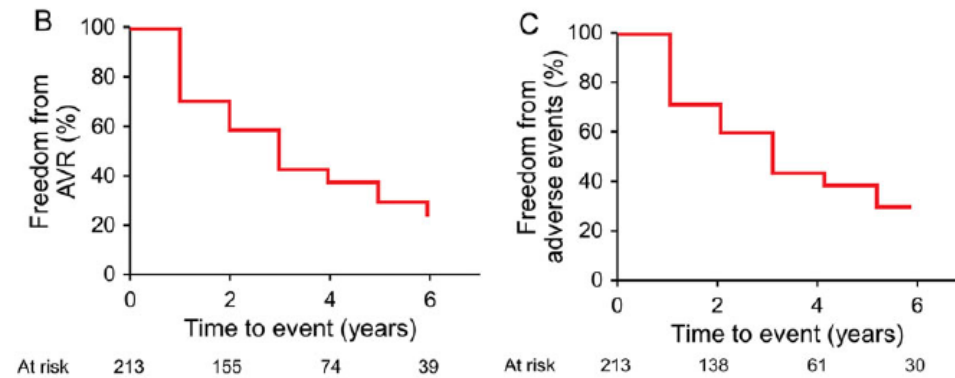
Heart. 2017 Nov;103(21):1696-1703



J Am Coll Cardiol. 2016 May 24;67(20):2321-2329.

Introduction

- **Mixed AS with exceeding a moderate degree AR**

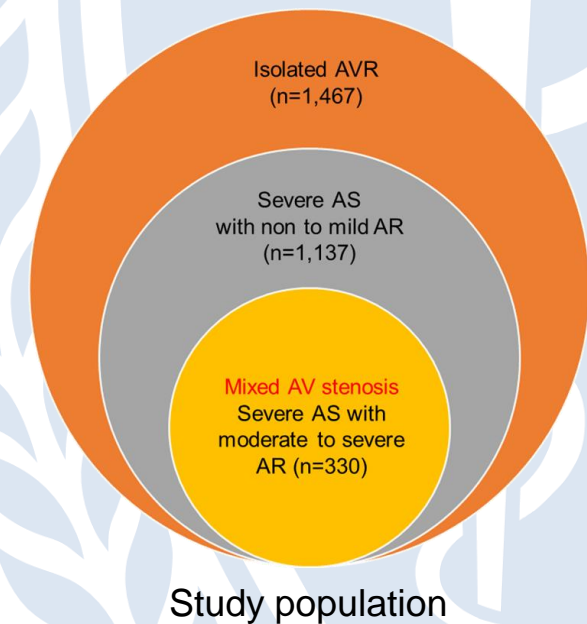


Eur Heart J. 2016 Sep 7;37(34):2671-8.

- **Long-term clinical and echocardiographic consequences after aortic valve replacement (AVR) in mixed AS and isolated AS patient**

Methods

- The study enrolled patients undergoing isolated AVR (n=1,467) between Oct 2000 and Dec 2021
- The AS group
 - n=1,137, 66.3±9.5yrs, 47.4% female
 - Mild or less AR combined with severe AS
- The mixed AS group
 - n=330, 64.6±10.8yrs, 39.1% female
 - Moderate to severe AR alongside severe AS



Methods

- **The primary endpoints**
 - All-cause mortality
 - Serial echocardiographic parameters
- **The secondary endpoints**
 - **Composite outcomes**
 - Death
 - Valve-related adverse events including
 - Heart failure requiring hospitalization
 - reoperation
 - stroke



Results

■ Baseline characteristics

	AS (n = 1,137)	Mixed AS (n = 330)	p-value	SMD
Characteristics				
Age, years (mean ± SD)	66.3 ± 9.5	64.6 ± 10.8	0.005	0.171
Female, n (%)	539 (47.4)	129 (39.1)	0.009	0.168
BMI, m ² /kg (mean ± SD)	25.0 ± 3.4	24.3 ± 3.5	<0.001	0.222
DM, n (%)	279 (24.5)	62 (18.8)	0.035	0.140
HTN, n (%)	572 (50.3)	153 (46.4)	0.230	0.079
Dyslipidemia, n (%)	403 (35.4)	88 (26.7)	0.004	0.191
COPD, n (%)	73 (6.4)	21 (6.4)	1.000	0.071
CVA, n (%)	45 (4.0)	18 (5.5)	0.305	0.002
ESRD, n (%)	43 (3.8)	11 (3.3)	0.830	0.024
Previous PCI, n (%)	71 (6.2)	13 (3.9)	0.146	0.105
Redo OHS, n (%)	13 (1.1)	7 (2.1)	0.182	0.077
Atrial fibrillation, n (%)	550 (41.0)	937 (56.1)	<0.001	0.055

AS : aortic stenosis; BMI : Body mass index; COPD : chronic obstructive pulmonary disease;
CVA : cerebrovascular accident; DM : Diabetes mellitus; ESRD : End stage renal disease;
HTN : Hypertension; OHS : Open heart surgery; PCI : Percutaneous coronary intervention;
SD : standard deviation



Results

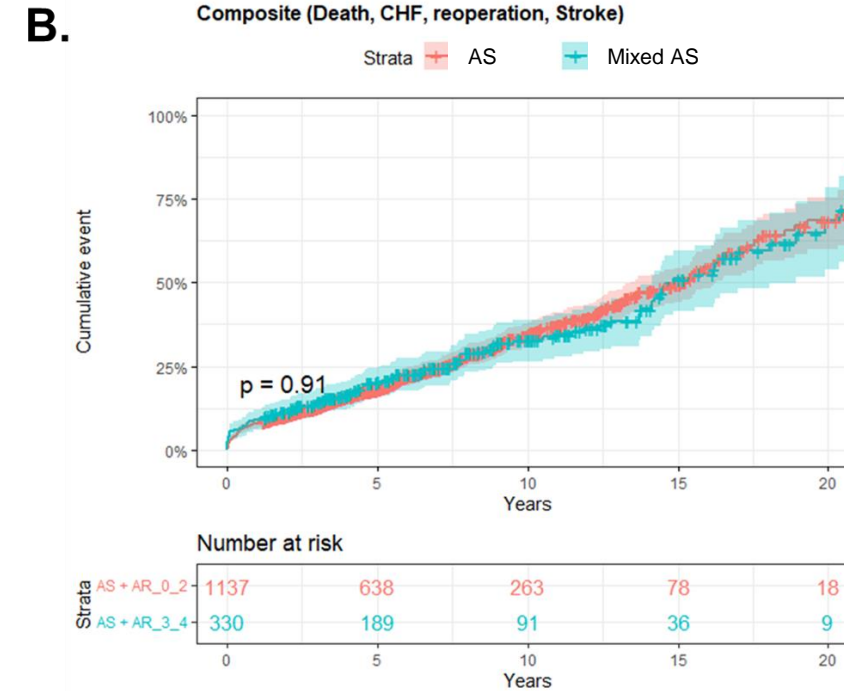
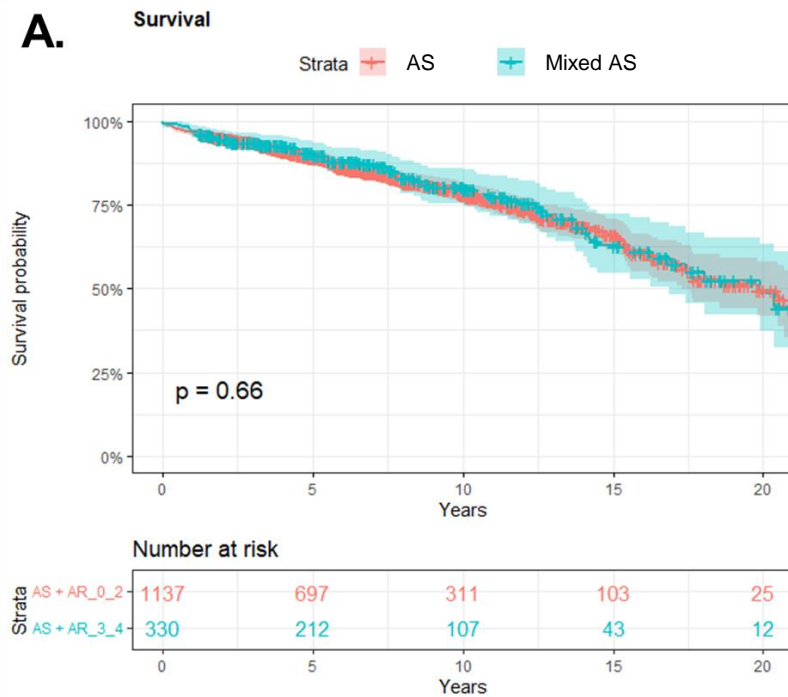
▪ Echocardiographic and Operative characteristics

	AS (n = 1,137)	Mixed AS (n = 330)	p-value	SMD
Echocardiographic Data				
Bicuspid aortic valve, n (%)	559 (49.2)	103 (31.5)	<0.001	0.366
LVD systolic, mm (mean ± SD)	30.4 ± 7.6	37.2 ± 9.1	<0.001	0.811
LVD diastolic, mm (mean ± SD)	48.4 ± 6.1	55.6 ± 7.7	<0.001	1.039
LV mass index, g/m ² (mean ± SD)	130.8 ± 37.2	171.5 ± 48.3	<0.001	0.946
AV_PG_Mean (mean ± SD)	64.4 ± 20.1	66.1 ± 19.7	0.185	0.083
EF, % (mean ± SD)	60.8 ± 10.2	57.2 ± 11.9	<0.001	0.320
MR, n (%)			<0.001	0.485
Non to trace	984 (86.6)	237 (71.8)		
Mild	123 (10.8)	71 (21.5)		
Moderate	27 (2.4)	17 (5.2)		
Severe	3 (0.3)	5 (1.5)		
Operative characteristics				
Tissue valve, n (%)	695 (61.1)	192 (58.2)	0.369	0.060
Valve size, mm (mean ± SD)	21.9 ± 2.0	22.7 ± 2.1	<0.001	0.379
MICS, n (%)	388 (34.1)	98 (29.7)	0.150	0.095
CPB time, min (mean ± SD)	101.1 ± 45.4	102.9 ± 34.9	0.529	0.042
ACC time, min (mean ± SD)	66.4 ± 23.8	67.3 ± 24.4	0.578	0.035

ACC : Aortic cross clamping; AS : aortic stenosis; CPB : Cardiopulmonary bypass; EF : ejection fraction; AV_PG : left ventricular pressure gradient; LVD : Left ventricular dimension; MICS : minimal invasive cardiac surgery; MR : Mitral regurgitation; SD : standard deviation

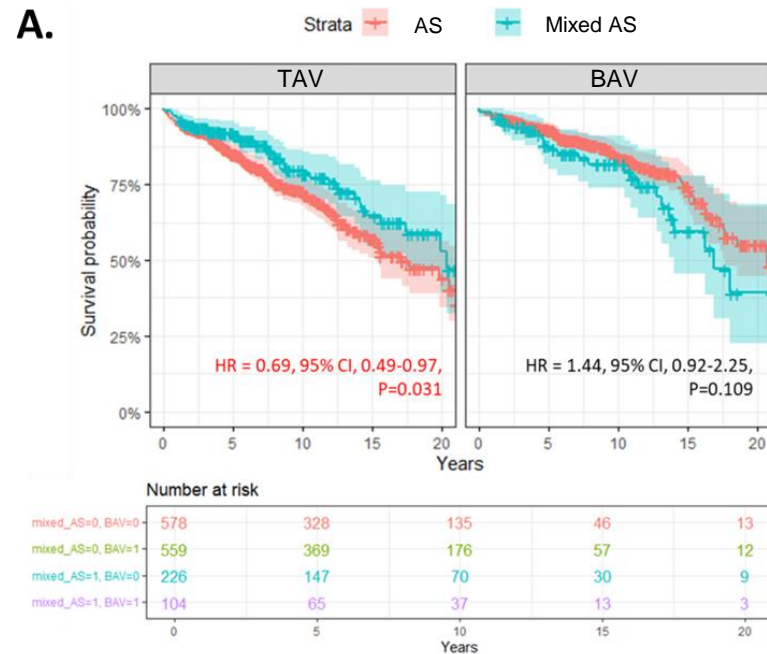
Results

- Survival (A) and Composite outcomes of valve related adverse events (B) between AS and mixed AS group

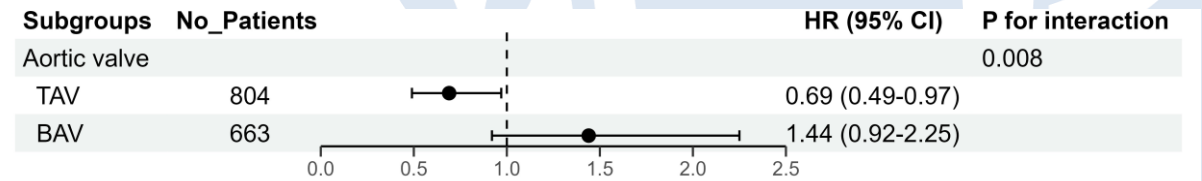


Results

- Survival curve according to presence of BAV (A) and subgroup analysis for mortality (B) between AS and mixed AS group

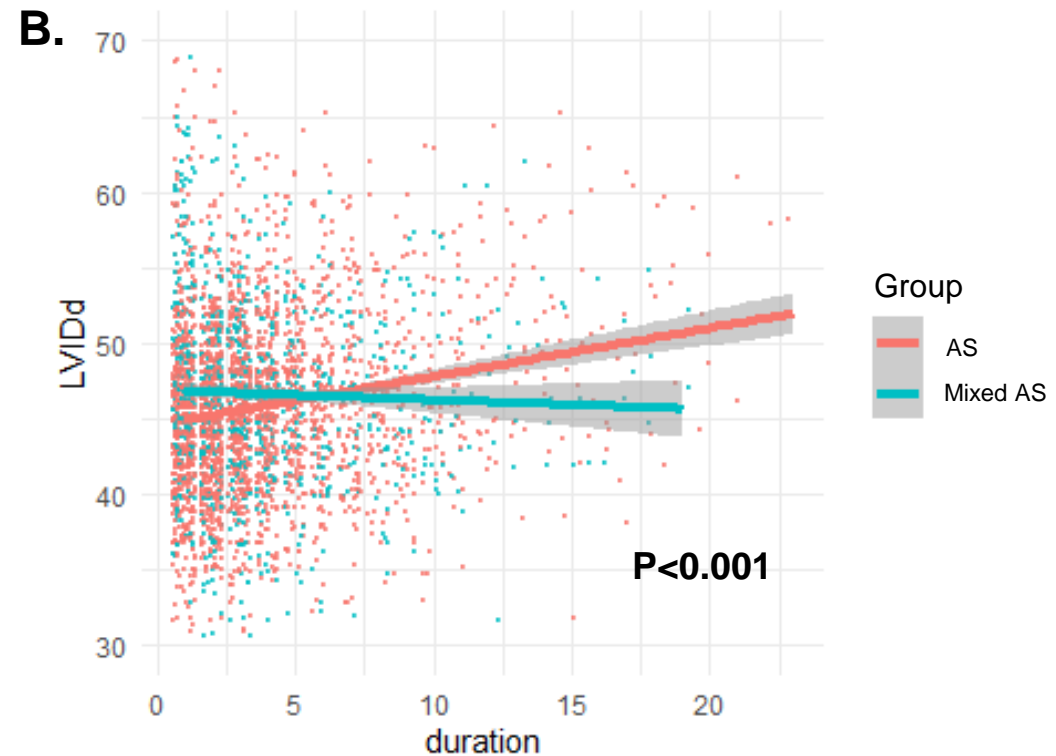
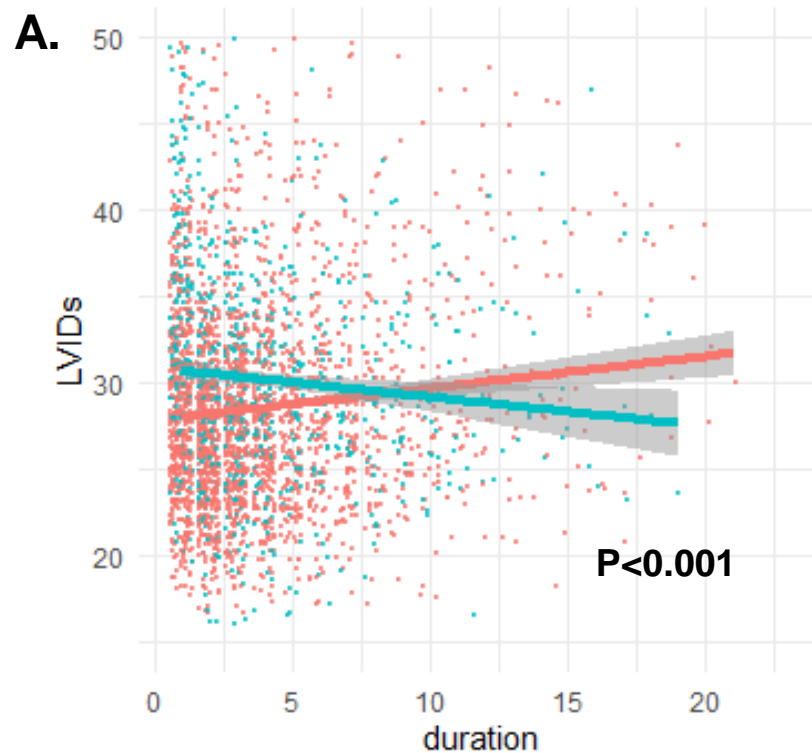


B.



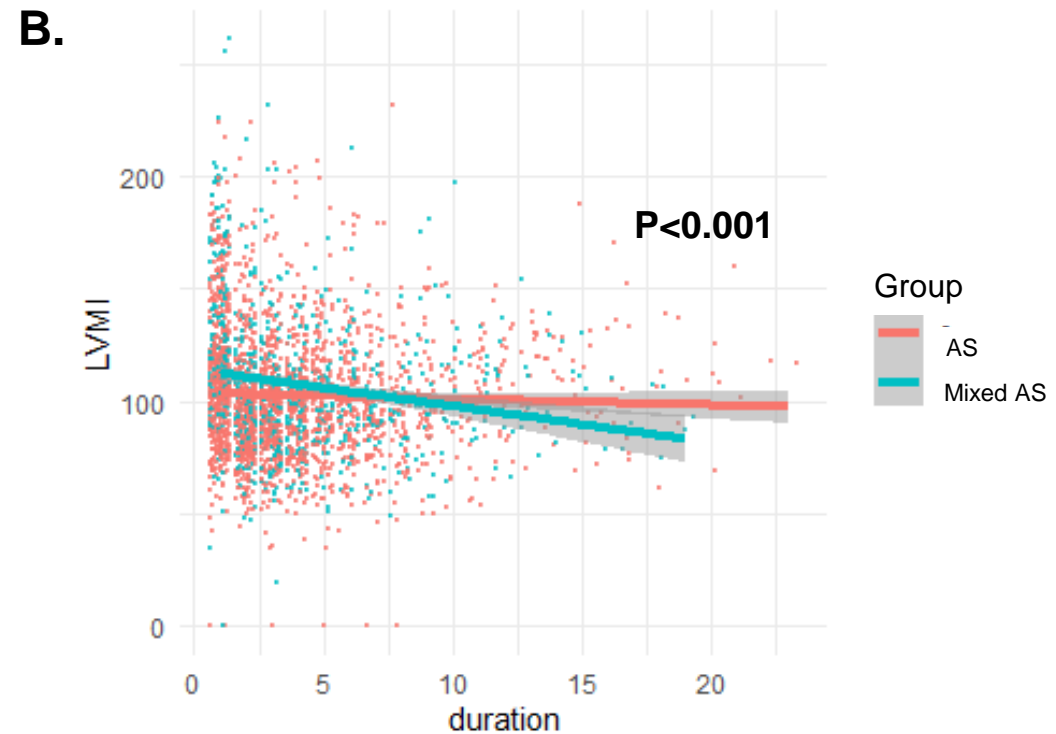
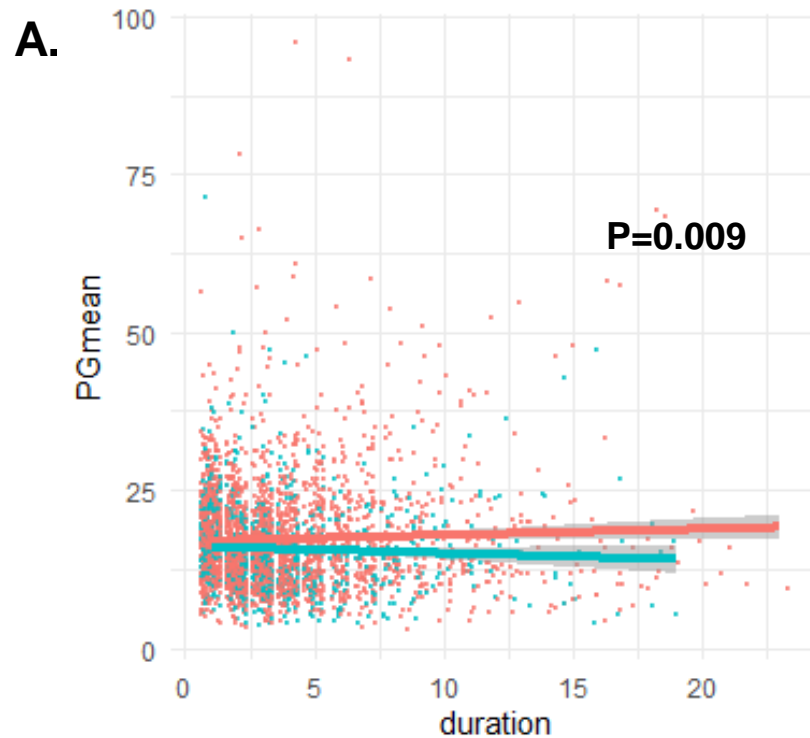
Results

- Serial echocardiographic parameter of LVIDs (A), LVIDd (B) between TAV patients of AS and mixed AS group



Results

- Serial echocardiographic parameter of PG mean across AV (A), LVMI (B) between TAV patients of AS and mixed AS group



Conclusions

- **The AS and mixed AS group, which underwent AVR, showed comparable survival and composite of valve related adverse events.**
- **However, the mixed AS group exhibited more favorable survival rates in patients with TAV.**
- **LV dimensions, PG across AV and LVMI showed a progressive reduction in the mixed AS group compared to isolated AS group after AVR in patients with TAV.**