



Contemporary Outcomes of Common Femoral Endarterectomy

Armin Tabiei, M.D., Venkata V. Vaddavalli, M.B.B.S., Jesse Chait, D.O., M.S., Manju Kalra, M.B.B.S., Thomas C. Bower, M.D., Randall R. DeMartino M.D., M.S., Melinda S. Schaller, M.D., Bernardo C. Mendes, M.D., Todd E. Rasmussen, M.D., Jill J. Colglazier, M.D., Fahad Shuja, M.B.B.S.
Division of Vascular and Endovascular Surgery, Mayo Clinic, Rochester, MN

BACKGROUND

Published data¹ has cited:

- High mortality
- High morbidity

Associated with common femoral endarterectomy (CFE), lending support for endovascular therapies

OBJECTIVES

- Analyze patient data and study contemporary outcomes of CFE at an academic hospital

METHODS

- Retrospective single-center cohort study 2018-2023
- Primary outcome measures:
 - 30-day morbidity and mortality
 - Primary patency
 - Freedom from major amputation
 - Overall survival
 - Freedom from reintervention

362 patients that underwent CFE

90 excluded

- Urgent/emergent CFE
 - Access-related complication
- Redo CFE or bypass

272 patients included
First-time CFE for chronic PAD

DEMOGRAPHICS

Variable	Limbs treated (n=320)
Mean age, (SD)	72 (11)
Male, n (%)	230 (72)
CAD, n (%)	205 (64)
DM, n (%)	133 (42)
COPD, n (%)	105 (33)
CHF, n (%)	71 (22)
ESRD, n (%)	16 (5)
Mean pre-operative ABI, (SD)	0.49 (0.20)
Rutherford score, n (%)	
1-3	169 (53)
4	67 (21)
5-6	84 (26)
Tibial runoff, n (%)	
0	1 (1)
1	40 (13)
2	96 (30)
3	173 (54)

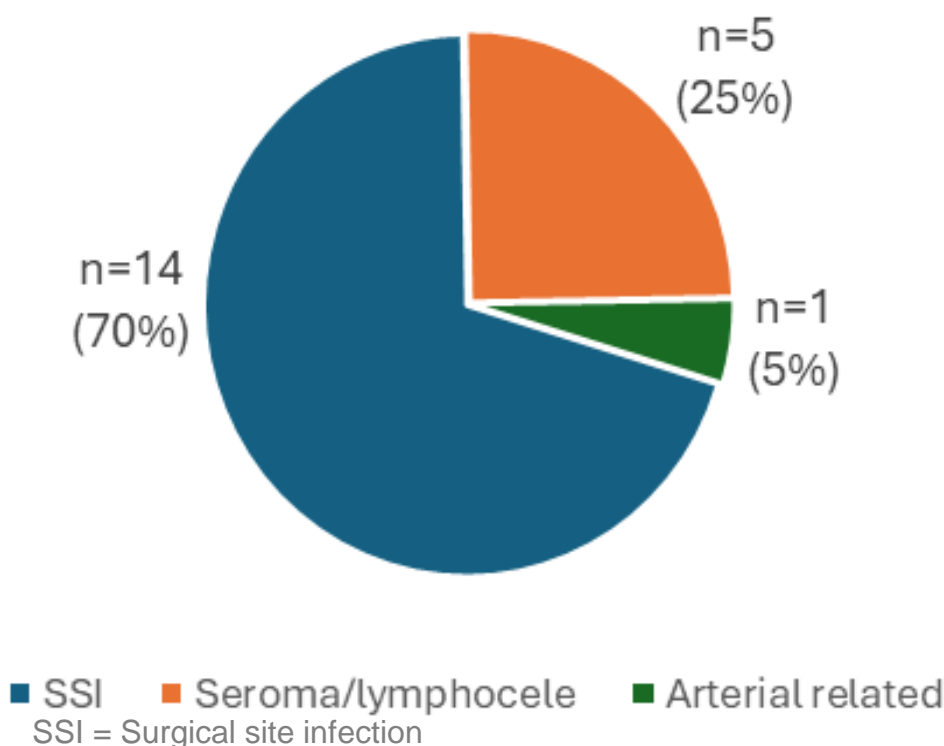
DISEASE CHARACTERISTICS

Variable	Limbs treated (n=320)
Ipsilateral SFA patency, n (%)	
Patent (<50% stenosis)	48 (15)
Diseased (50-99% stenosis)	135 (43)
Occluded	133 (42)

RESULTS - PERIPROCEDURAL

Variable	Limbs treated (n=320)
Concomitant endovascular intervention	
Proximal intervention, (%)	165 (52)
Distal intervention, (%)	50 (16)
Median length of stay, days	3 (IQR, 2-5)
Post-operative (30-days) complication	
Mortality, n (%)	2 (1)
Myocardial infarction, n (%)	8 (3)
Wound complication, n (%)	34 (11)

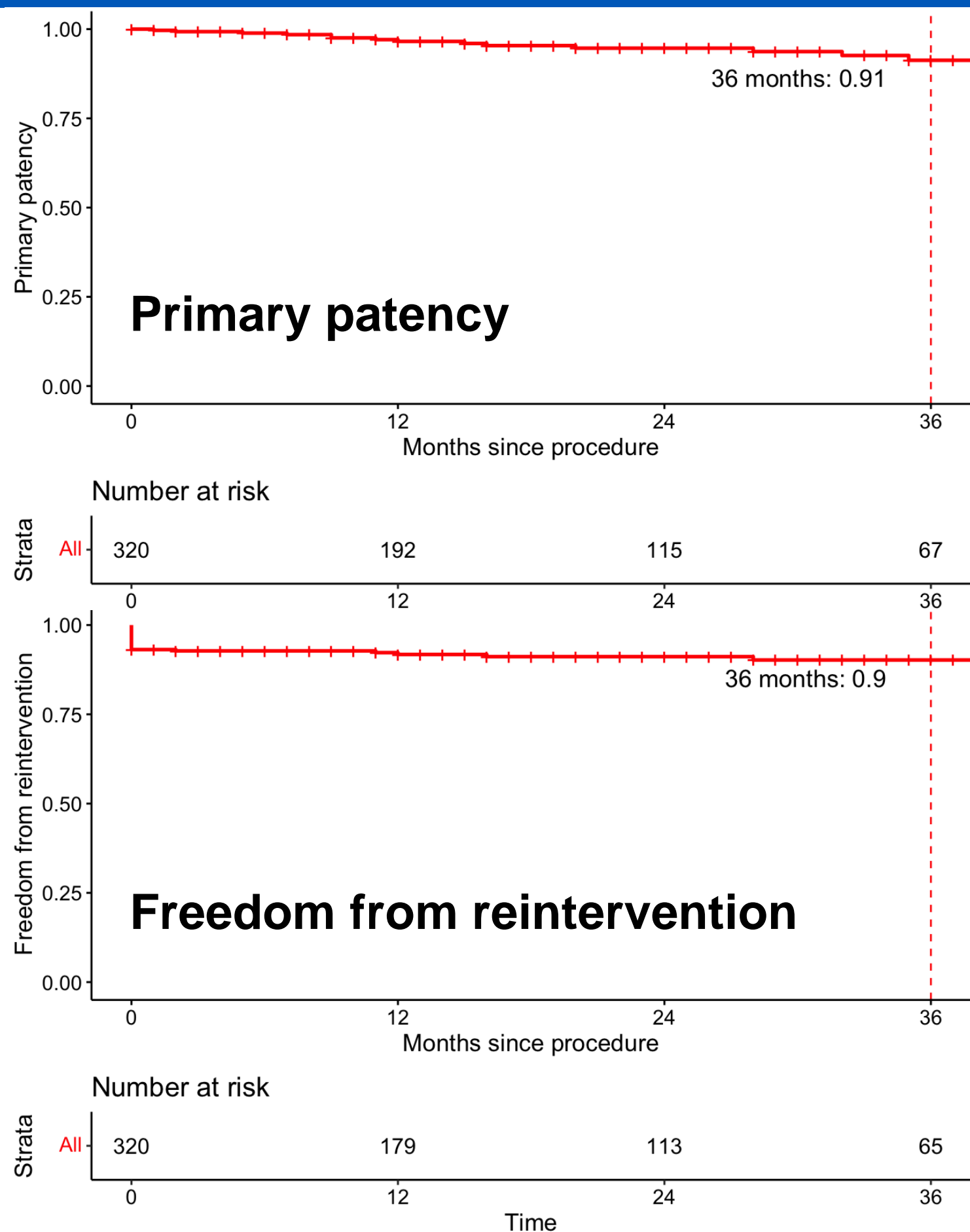
30-DAY REINTERVENTIONS



RESULTS – FOLLOW-UP

Variable	Limbs treated (n=320)
Median follow-up (m)	19
Mean ABI at last follow-up, (SD)	0.74 (0.24)
Overall survival at 5-years, (%)	50

RESULTS – FOLLOW-UP OUTCOMES



CONCLUSIONS

Common femoral endarterectomy remains a safe and durable treatment for femoral artery occlusive disease. Early re-interventions are largely driven by wound complications and not technical failure.